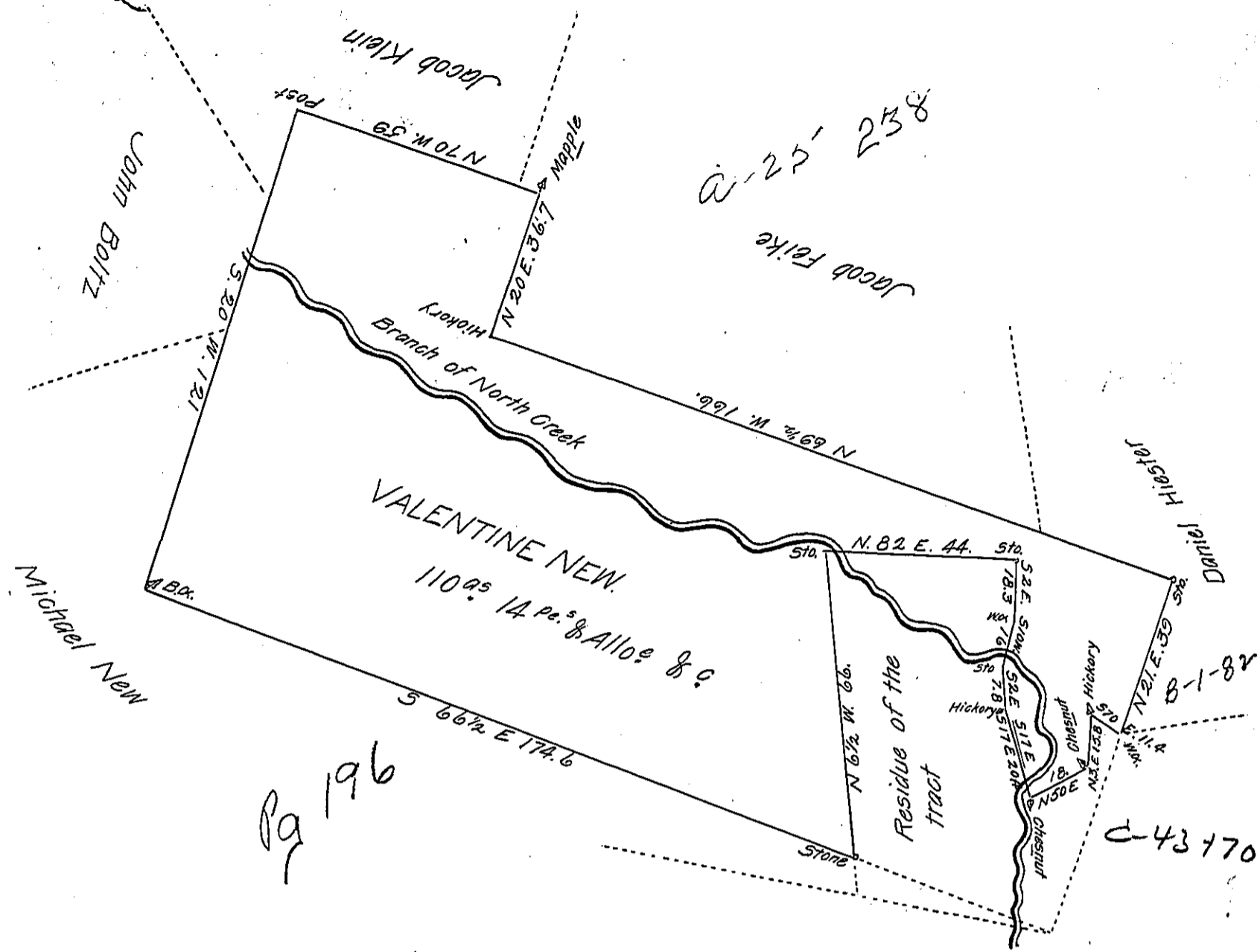


FORM NO. 1.



Situate in Tulpehocken Township Berks County Containing One hundred and ten acres
 14 perches and the allowance of six per cent for Roads &c. part of 129 acres & allowance
 originally Survey'd to Valentine New (allias Hay) by Virtue of a Warrant bearing date
 the 5th day of Aprile 1739. Resurvey'd the above the 6th July 1821.

per J^{no} V. Epler D.S.

To Samuel Cochrane Esq. }
 Surveyor General

IN TESTIMONY that the above is a copy of the original remaining on file in
 the Department of Internal Affairs of Pennsylvania, made
 conformably to an Act of Assembly approved the 16th day of
 February, 1833, I have hereunto set my Hand and caused
 the Seal of said Department to be affixed at Harrisburg,
 this Seventh day of March 1906.

George D. Pearson
 Secretary of Internal Affairs.